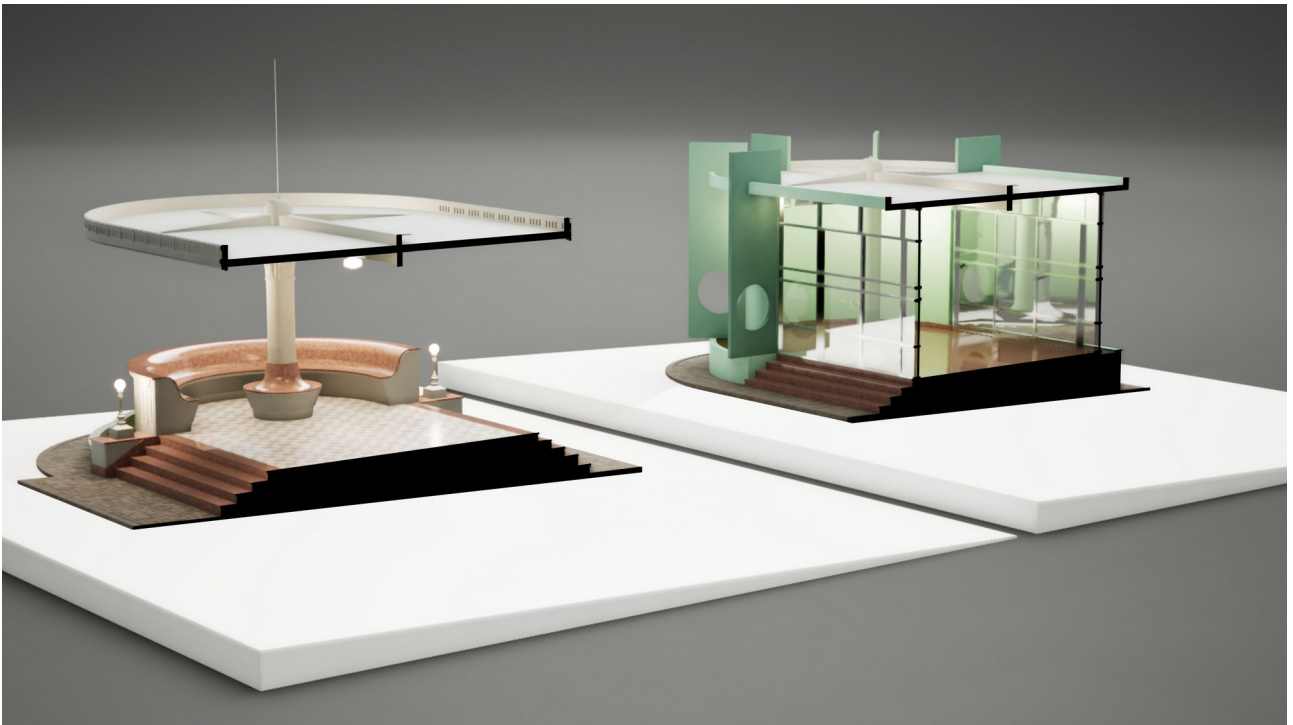


# Art Déco Bandstand



### Description

The Bandstand at Goiânia's Civic Square, designed by architect Jorge Felix de Souza and inaugurated in 1942, is an Art Deco structure notable for its location on the edge of the square, marking the beginning of Goiás Avenue. Unlike other bandstands, it was placed at the square's periphery, enhancing its urban significance. Throughout its history, the Bandstand underwent significant changes, including uncharacterizing modifications and later reconstruction, reflecting the dynamics between heritage preservation and urban transformation.

### Contact Person

Marília Rezende  
E-Mail: mariliarezende@gmail.com

UFG - Av. Esperança, s/n - Campus Samambaia,  
Goiânia - GO, 74690-900, Brasil

### Scientific Advisor

Marília Rezende

### Modelling

Marília Rezende

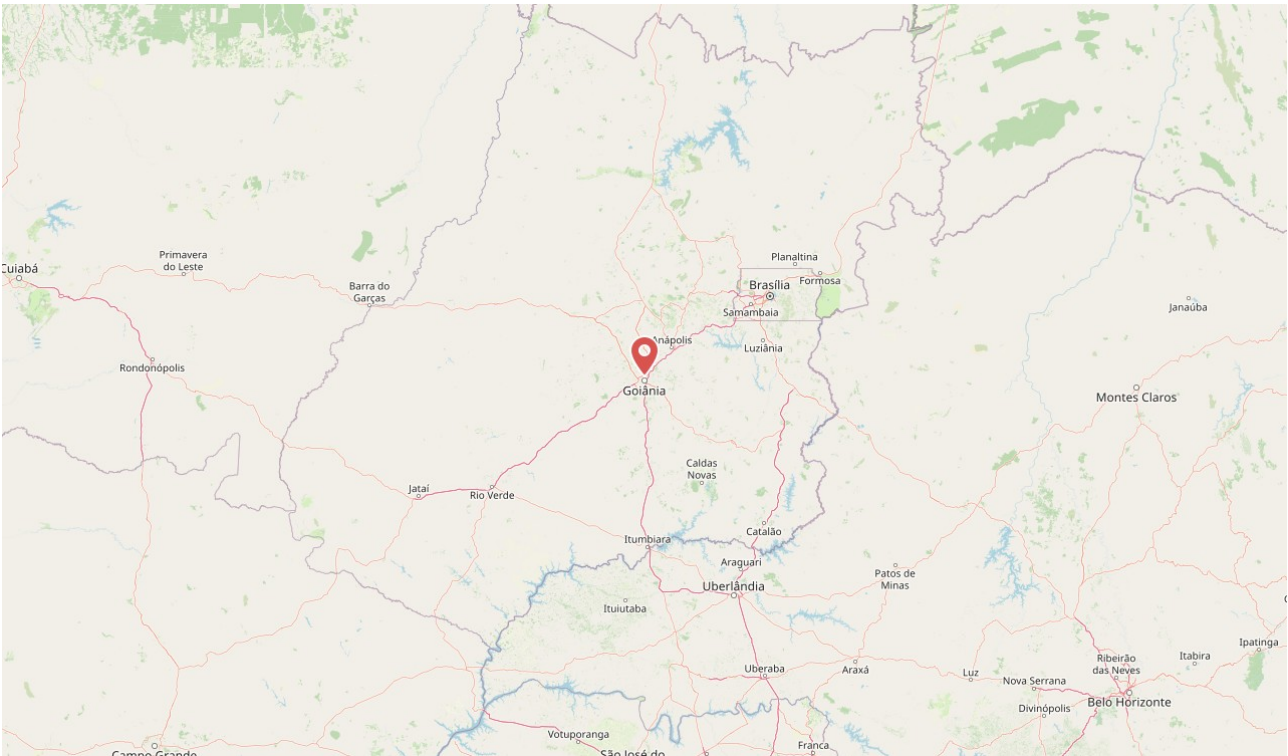
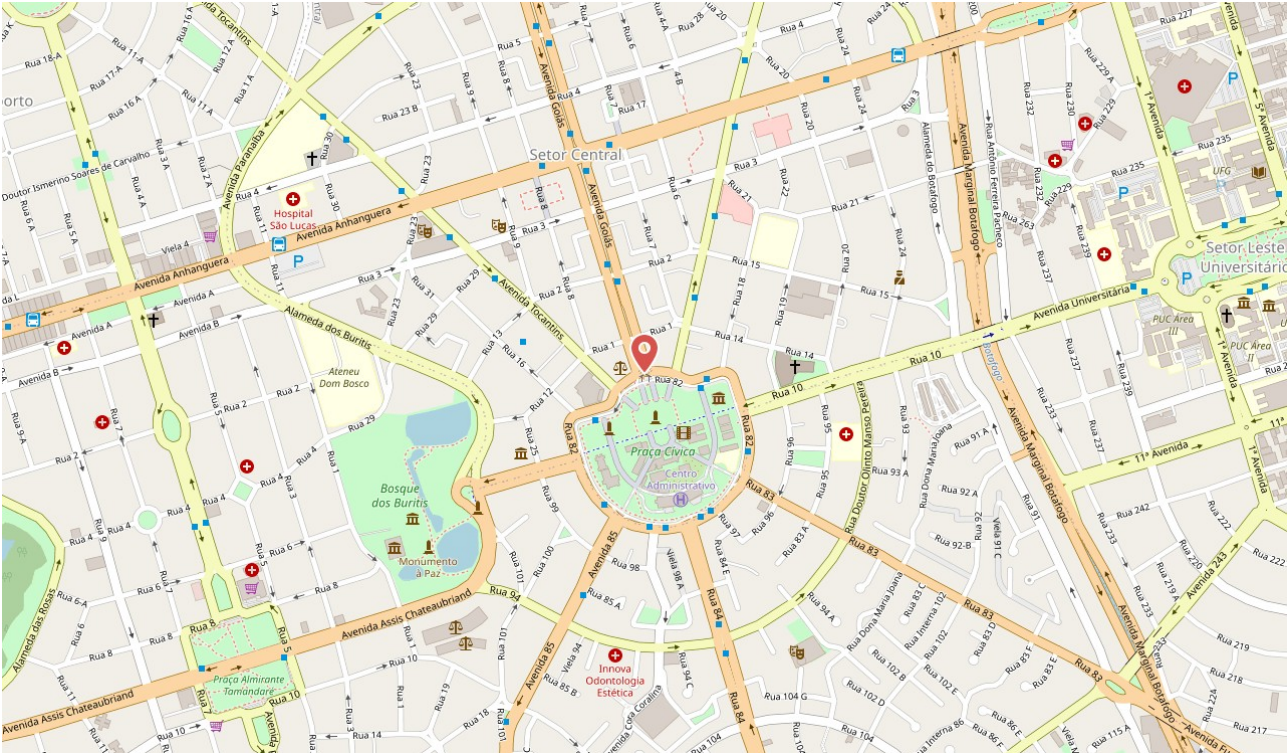
### Cooperation Partnership

### Used software

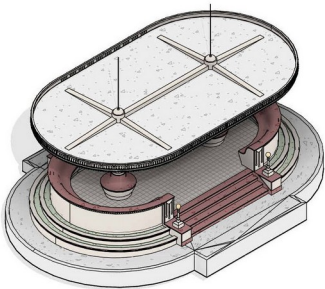
SketchUp, Revit 2025, AutoCAD 2025, Abvent  
Twinmotion

Geo-coordinates

Latitude -16.679449 Longitude -49.256714

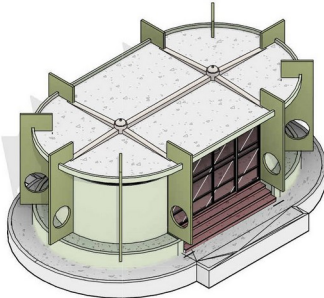






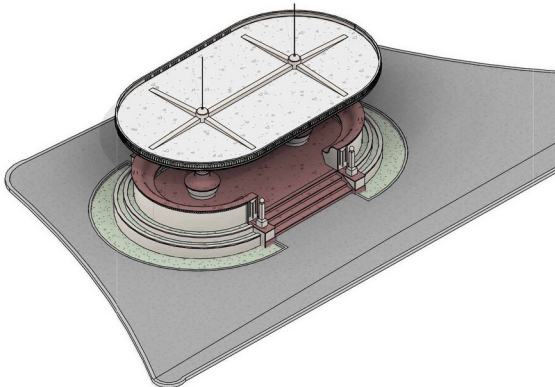
Coreto - 3D - 1942

Fig. 19 Art Déco Bandstand - 1942 - 3D



Coreto - 1975 - 3D

Fig. 27 Art Déco Bandstand - 1971-1979 - 3D



Coreto - 2020 - 3D

Fig. 32 Art Déco Bandstand - 2020 - 3D



Fig. 53 Art Déco Bandstand - 1942 - 3D

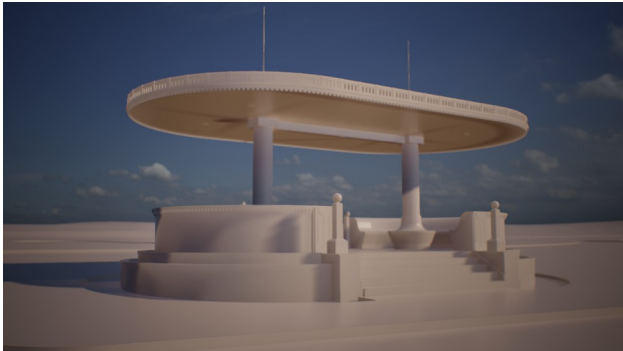
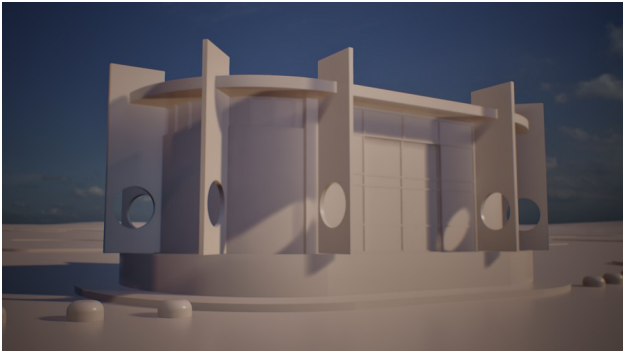


Fig. 49 Art Déco Bandstand - 2020 - 3D



**Fig. 54** Art Déco Bandstand - 1971-1979 - 3D



**Fig. 51** Art Déco Bandstand - 1942 - 3D



**Fig. 50** Art Déco Bandstand - 2020 - 3D



**Fig. 52** Art Déco Bandstand - 1971-1979 - 3D

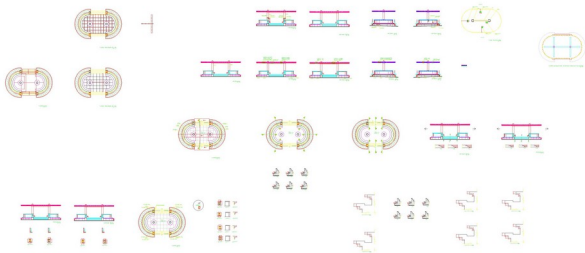
Selected sources



**Fig. 21** Coreto/ Avenida Goiás. Data desconhecida. Colonvist. Goiânia – Go. Acervo MIS|GO



**Fig. 22** Praça Cívica de Goiânia na década de 1950



**Fig. 40** AutoCAD drawings - ASBUILD



**Fig. 64** View of the square - 1975



**Fig. 61** Coreto (1971-1979)



**Fig. 62** Coreto (1971-1979)

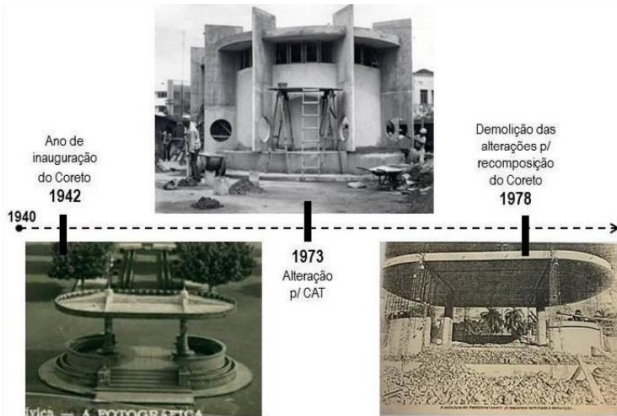


Fig. 63 Timeline of modifications



Fig. 41 Coreto after renovation - 2020



Fig. 45 Coreto after renovation - 2020



Fig. 43 Coreto after renovation - 2020

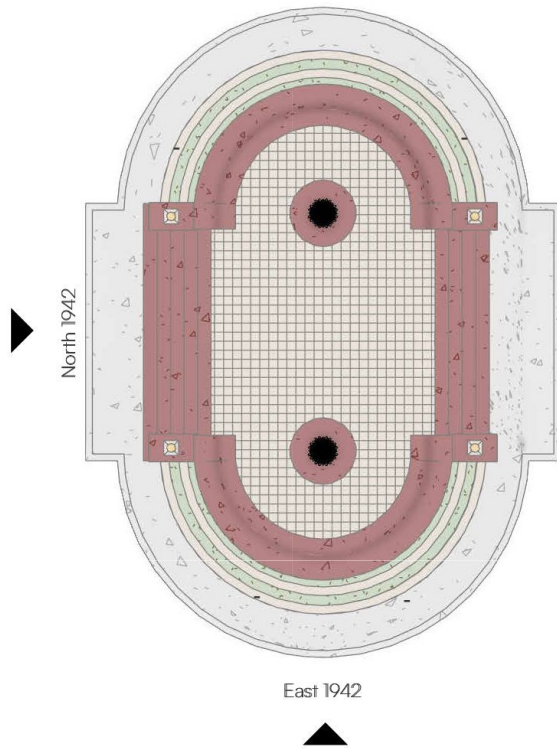


Fig. 44 Coreto after renovation - 2020



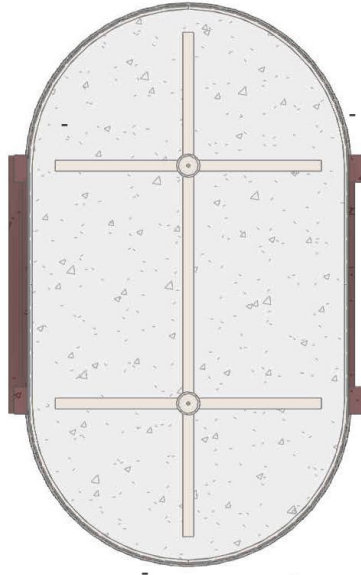
Fig. 42 Coreto after renovation - 2020





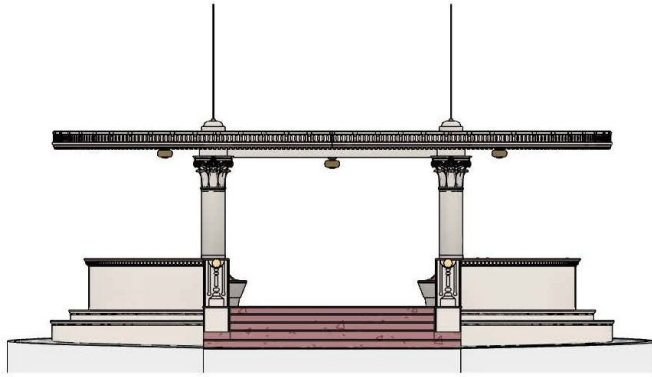
Coreto - 1942 - Groundfloor

**Fig. 10** Art Déco Bandstand - 1942 - Groundfloor



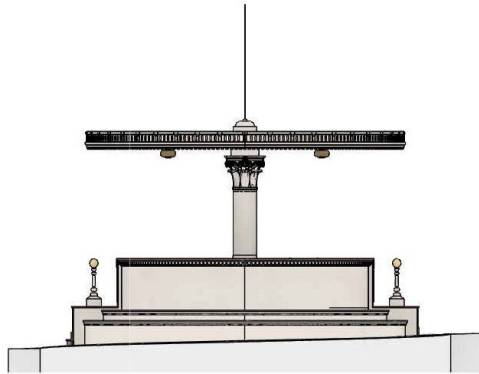
Coreto - 1942 - Roof

**Fig. 16** Art Déco Bandstand - 1942 - Roof



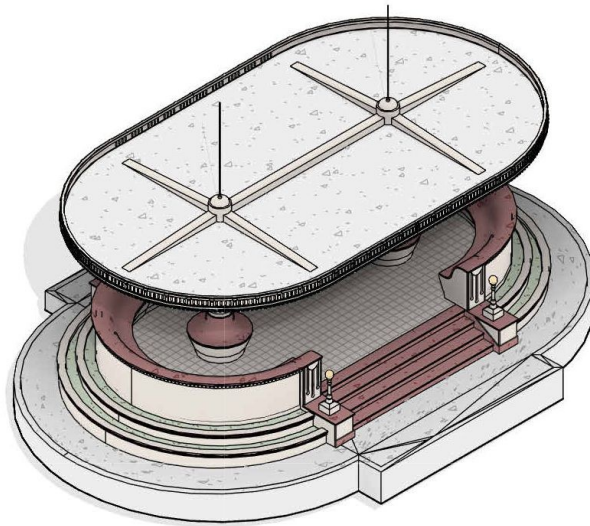
Coreto - 1942 - North

**Fig. 17** Art Déco Bandstand - 1942 - North



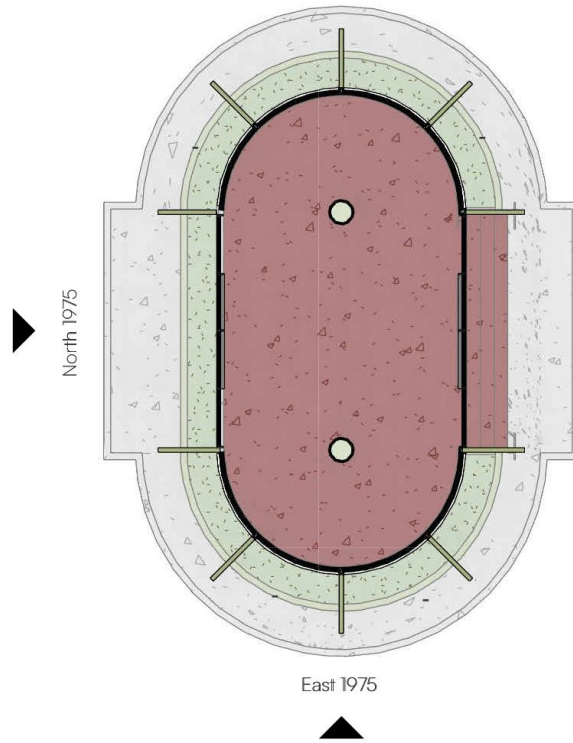
Coreto - 1942 - East

**Fig. 18** Art Déco Bandstand - 1942 - East



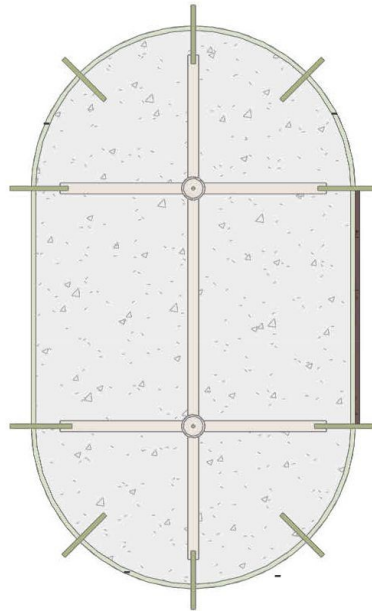
Coreto - 3D - 1942

**Fig. 19** Art Déco Bandstand - 1942 - 3D



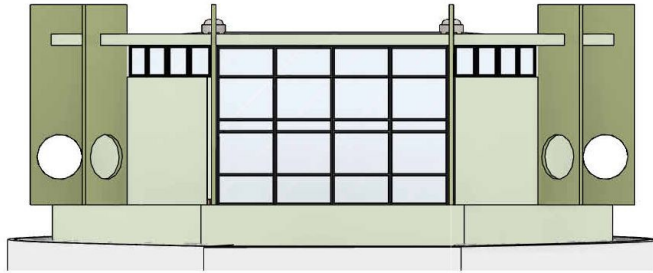
Coreto - 1975 - Groundfloor

**Fig. 23** Art Déco Bandstand - 1971-1979 - Groundfloor



Coreto - 1975 - Roof

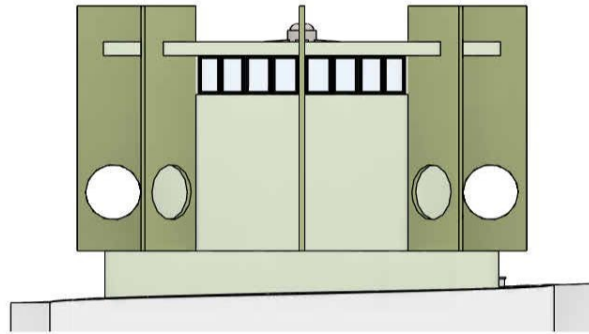
**Fig. 24** Art Déco Bandstand - 1971-1979 - Roof



Coreto - 1975 - North

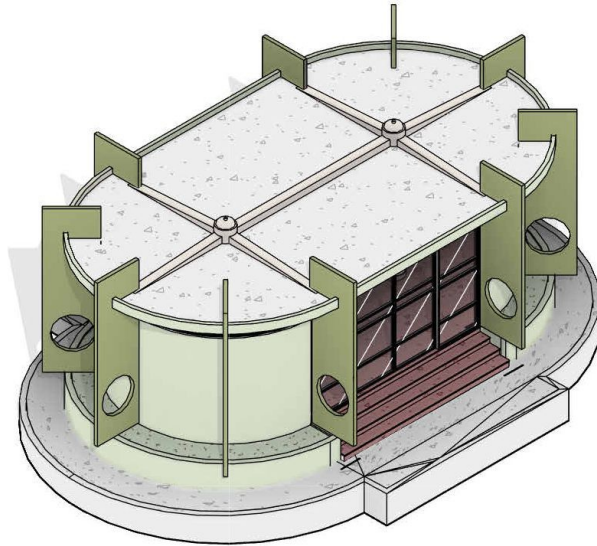
**Fig. 25** Art Déco Bandstand - 1971-1979 - North





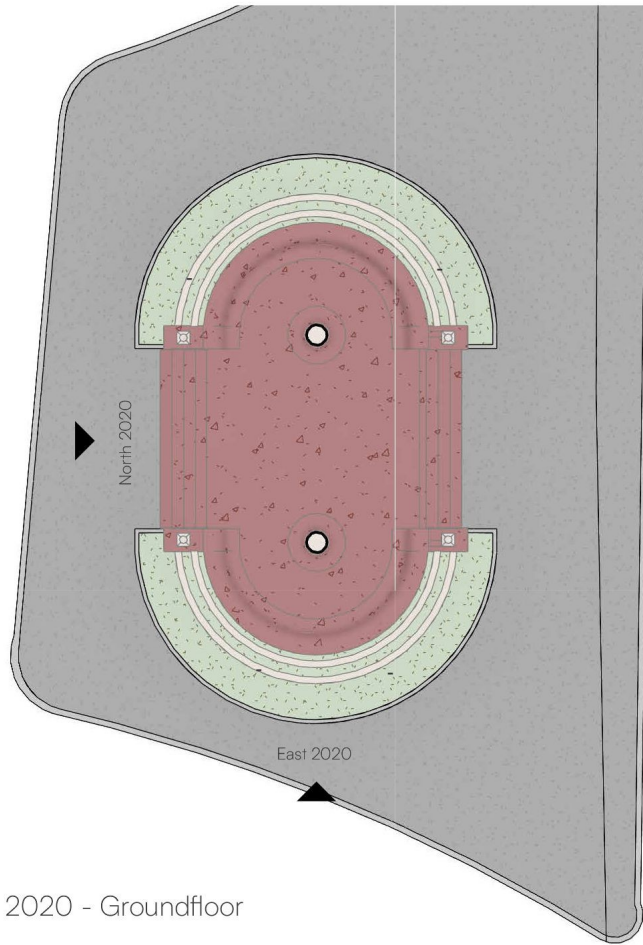
Coreto - 1975 - East

**Fig. 26** Art Déco Bandstand - 1971-1979 - East



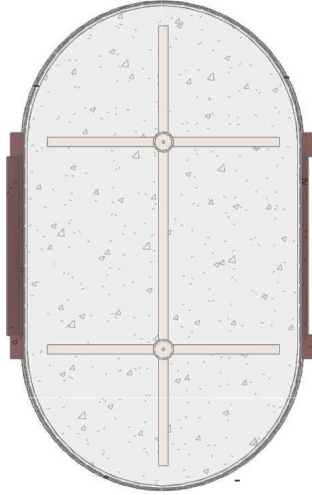
Coreto - 1975 - 3D

**Fig. 27** Art Déco Bandstand - 1971-1979 - 3D



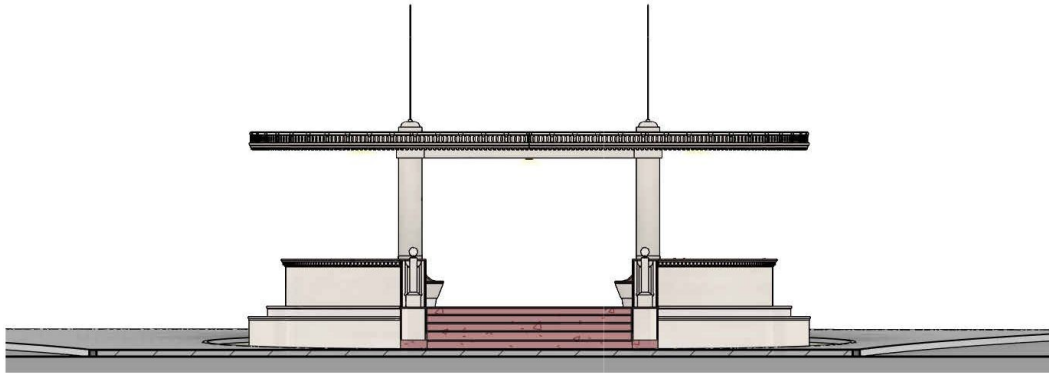
Coreto - 2020 - Groundfloor

**Fig. 28** Art Déco Bandstand - 2000 - Groundfloor.jpg



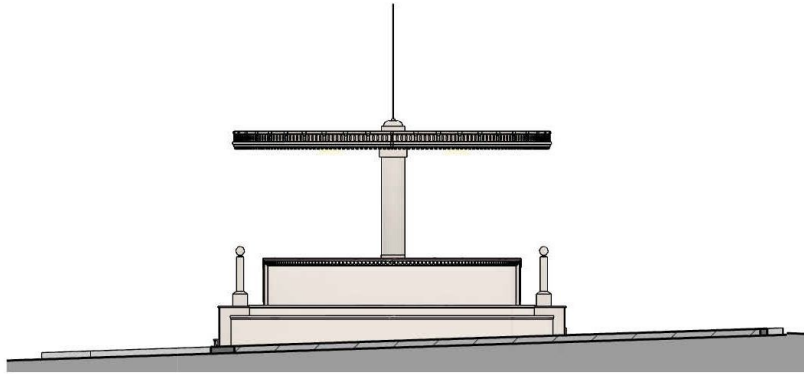
Coreto - 2020 - Roof

**Fig. 29** Art Déco Bandstand - 2020 - Roof.jpg



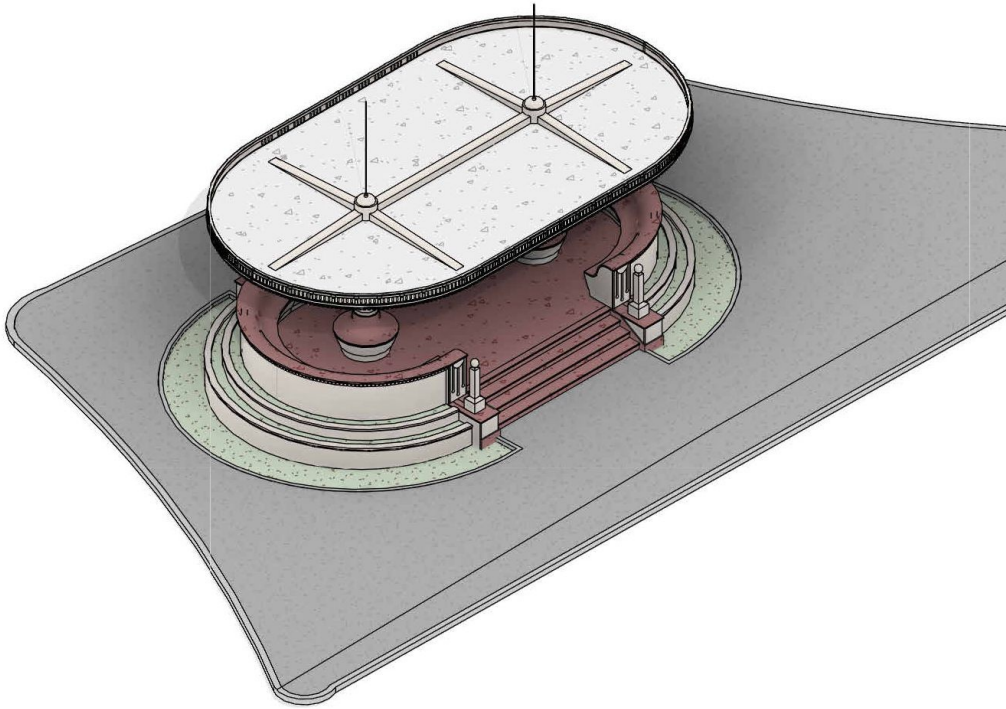
Coreto - 2020 - North

**Fig. 30** Art Déco Bandstand - 2020 - North



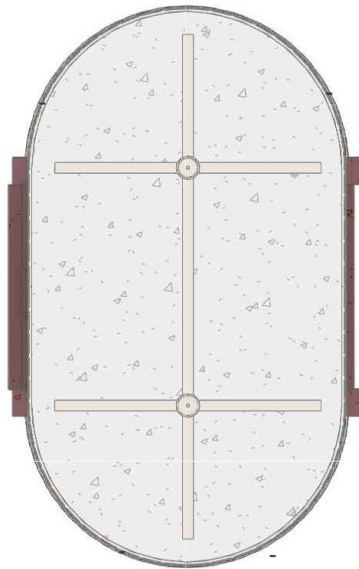
Coreto - 2020 - East

**Fig. 31** Art Déco Bandstand - 2020 - East



Coreto - 2020 - 3D

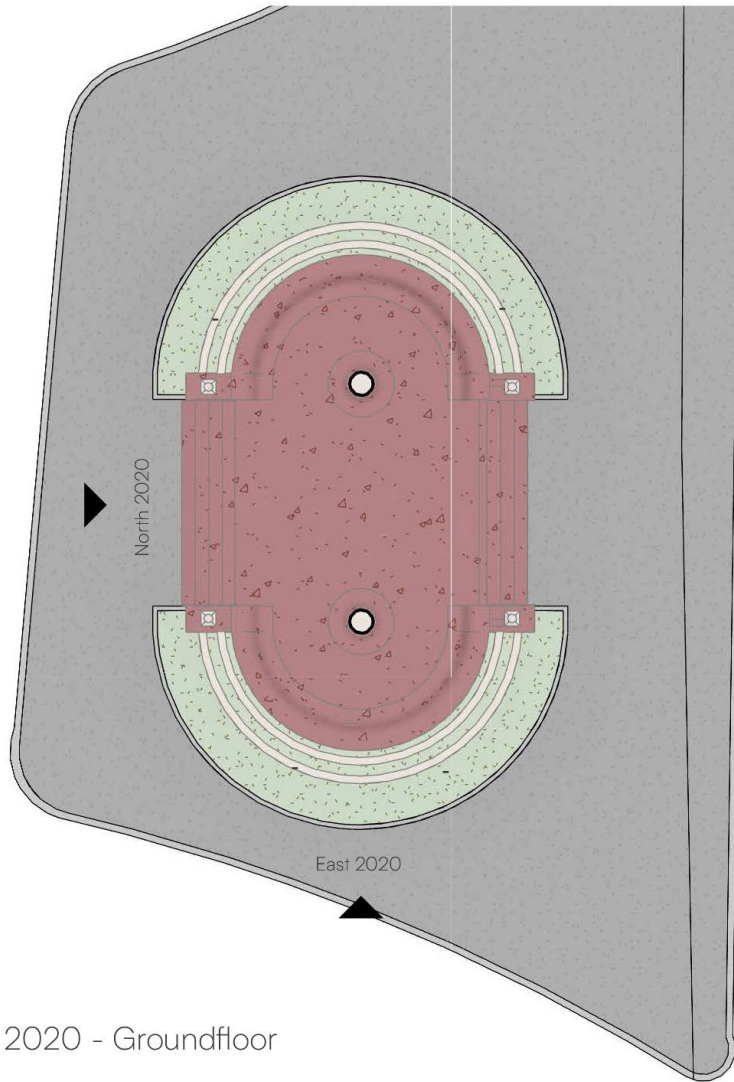
**Fig. 32** Art Déco Bandstand - 2020 - 3D



Coreto - 2020 - Roof

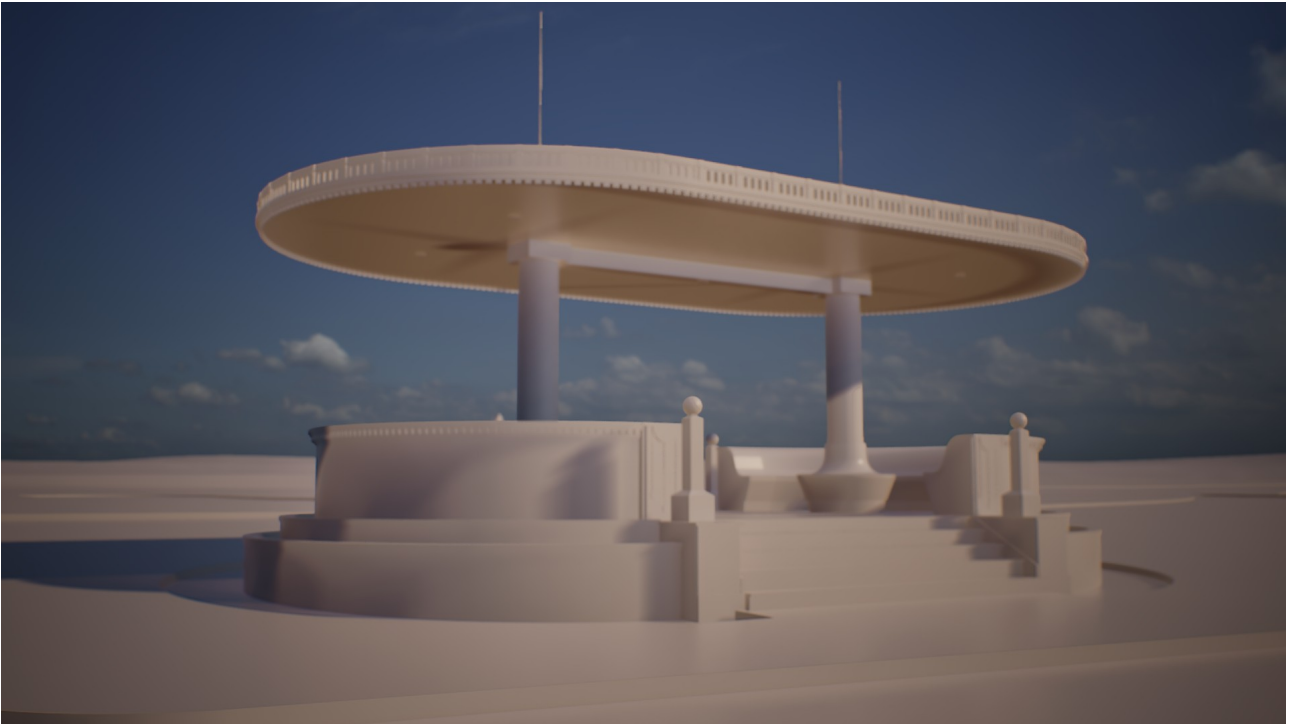
**Fig. 36** Art Déco Bandstand - 2020 - Roof





Coreto - 2020 - Groundfloor

**Fig. 39** Art Déco Bandstand - 2000 - Groundfloor



**Fig. 49** Art Déco Bandstand - 2020 - 3D



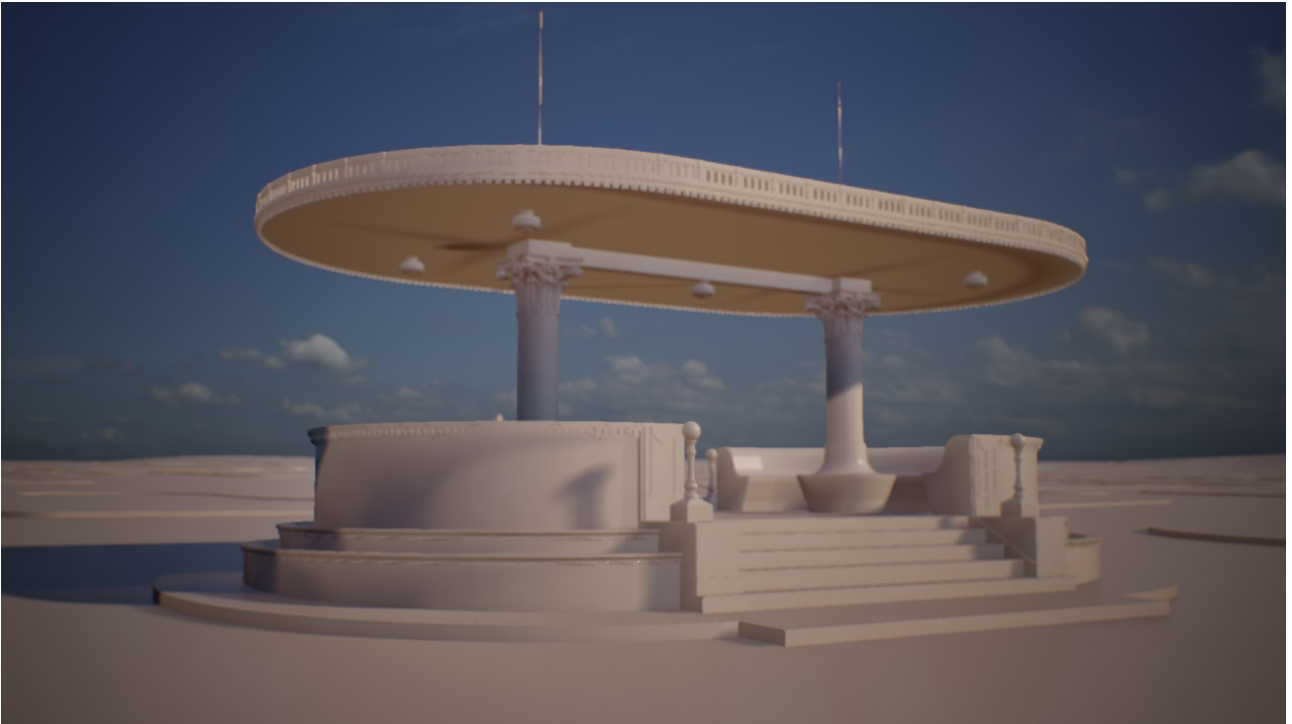
**Fig. 50** Art Déco Bandstand - 2020 - 3D



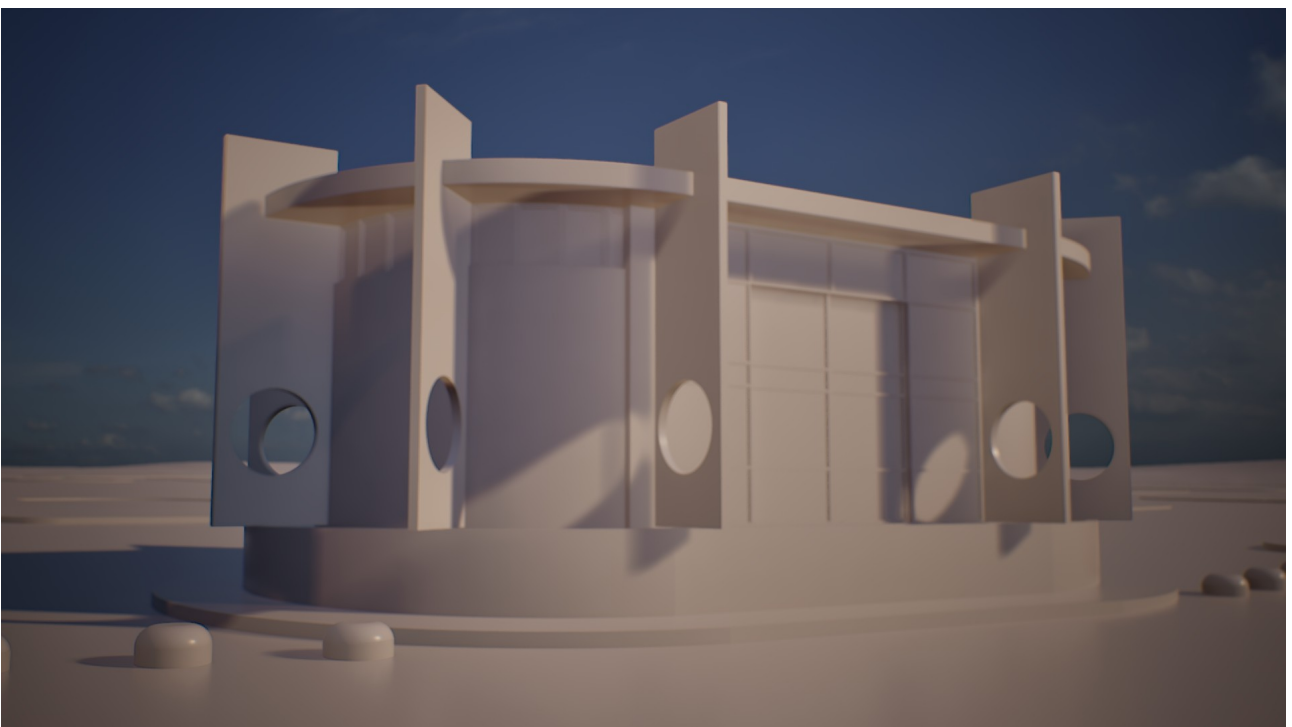
**Fig. 51** Art Déco Bandstand - 1942 - 3D



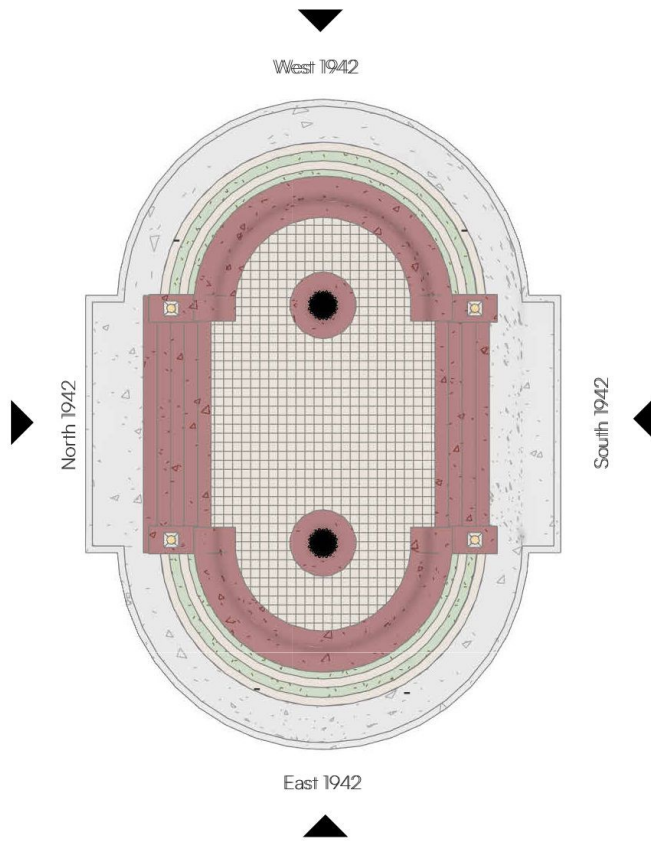
**Fig. 52** Art Déco Bandstand - 1971-1979 - 3D



**Fig. 53** Art Déco Bandstand - 1942 - 3D



**Fig. 54** Art Déco Bandstand - 1971-1979 - 3D



Coreto - 1942 - Groundfloor

**Fig. 11**

- Type**
- Description**
- Author**
- Archive**
- Signature**
- Copyright**



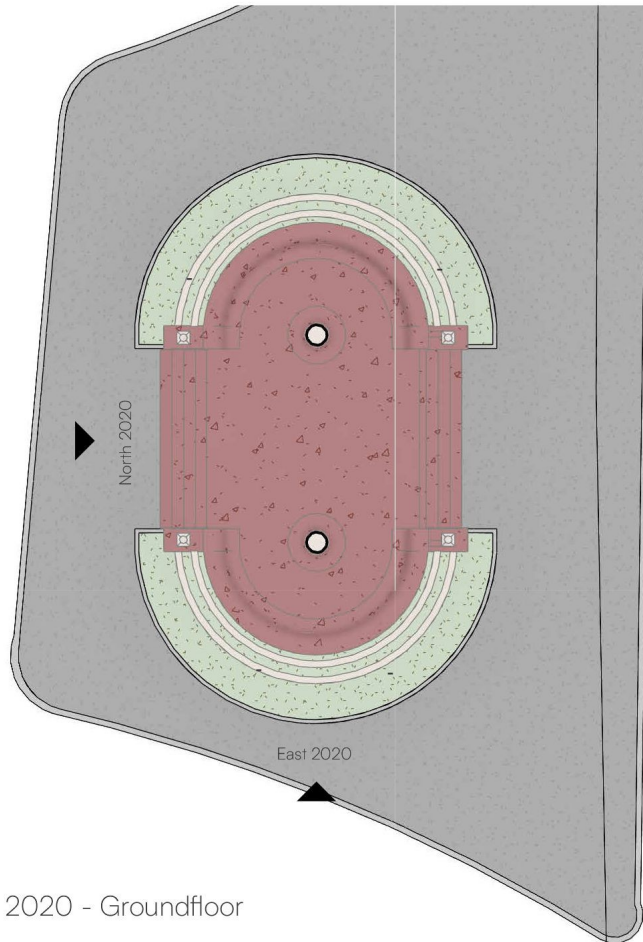
**Fig. 21** Coreto/ Avenida Goiás. Data desconhecida. Colonvist. Goiânia – Go. Acervo MIS|GO

Type	Photograph	Used in:
<b>Description</b>	Coreto/ Avenida Goiás. Data desconhecida. Colonvist. Goiânia – Go. Acervo MIS GO.	–
<b>Author</b>	Colonvist	–
<b>Archive</b>	Acervo MIS GO	–
<b>Signature</b>		–
<b>Copyright</b>		



**Fig. 22** Praça Cívica de Goiânia na década de 1950

Type	Photograph	Used in:
Description		–
Author		–
Archive	MIS-GO	–
Signature		–
Copyright		–

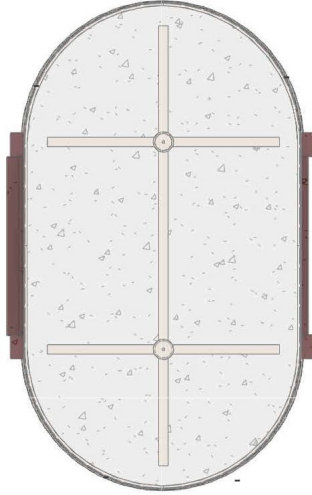


Coreto - 2020 - Groundfloor

**Fig. 34**

- Type**
- Description**
- Author**
- Archive**
- Signature**
- Copyright**





Coreto - 2020 - Roof

**Fig. 35**

**Type**

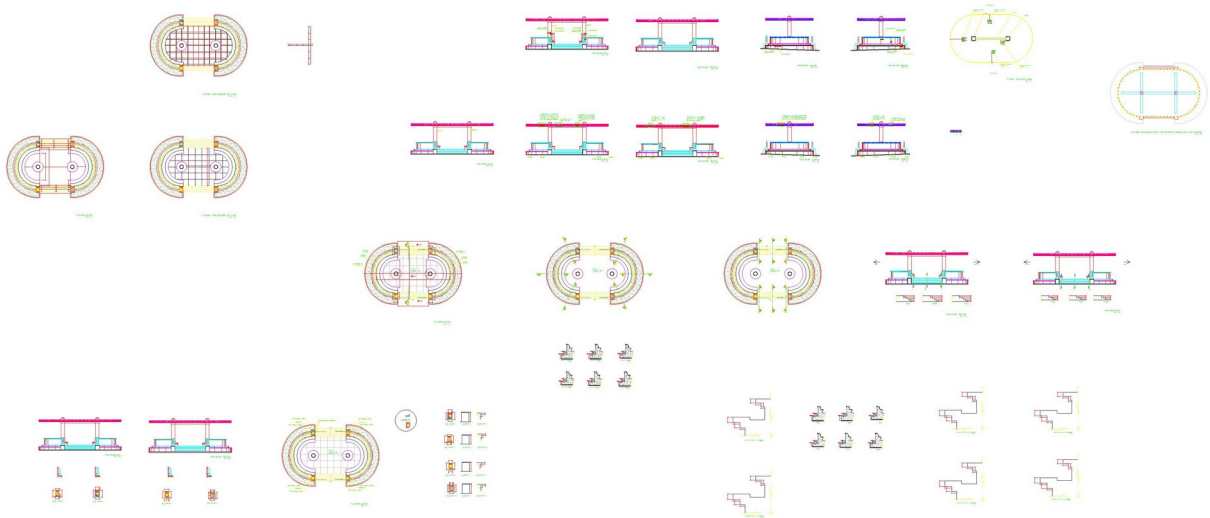
**Description**

**Author**

**Archive**

**Signature**

**Copyright**



**Fig. 40** AutoCAD drawings - ASBUILD

<b>Type</b>	Survey drawing	<b>Used in:</b>
<b>Description</b>	AutoCAD drawings of the Bandstand's as-built condition, which are part of the official collection of the Brazilian Government - IPHAN Goiás Headquarters - provided through an agreement for the research.	-
<b>Author</b>	IPHAN	-
<b>Archive</b>	IPHAN-GO	-
<b>Signature</b>		-
<b>Copyright</b>		-



**Fig. 41** Coreto after renovation - 2020

	Type	Used in:
	Photograph	
<b>Description</b>	Coreto after renovation - 2020	-
<b>Author</b>	Marcos Aleotti	-
<b>Archive</b>	Curta Mais	-
<b>Signature</b>		-
<b>Copyright</b>		-



**Fig. 42** Coreto after renovation - 2020

	Type	Used in:
	Photograph	
<b>Description</b>	Coreto after renovation - 2020	-
<b>Author</b>	Marcos Aleotti	-
<b>Archive</b>	Curta Mais	-
<b>Signature</b>		-
<b>Copyright</b>		-



**Fig. 43** Coreto after renovation - 2020

<b>Type</b>	Photograph	<b>Used in:</b>
<b>Description</b>	Coreto after renovation - 2020	-
<b>Author</b>	Marcos Aleotti	-
<b>Archive</b>	Curta Mais	-
<b>Signature</b>		-
<b>Copyright</b>		-



**Fig. 44** Coreto after renovation - 2020

<b>Type</b>	Photograph	<b>Used in:</b>
<b>Description</b>	Coreto after renovation - 2020	-
<b>Author</b>	Marcos Aleotti	-
<b>Archive</b>	Curta Mais	-
<b>Signature</b>		-
<b>Copyright</b>		-



**Fig. 45** Coreto after renovation - 2020

	Type	Used in:
	Photograph	
<b>Description</b>	Coreto after renovation - 2020	-
<b>Author</b>	Marcos Aleotti	-
<b>Archive</b>	Curta Mais	-
<b>Signature</b>		-
<b>Copyright</b>		-



**Fig. 60** Coreto (1971-1979)

<b>Type</b>	Photograph	<b>Used in:</b>
<b>Description</b>	Coreto (1971-1979)	-
<b>Author</b>	Jornal Opção	-
<b>Archive</b>	Jornal Opção	-
<b>Signature</b>		-
<b>Copyright</b>		-





**Fig. 61** Coreto (1971-1979)

<b>Type</b>	Photograph	<b>Used in:</b>
<b>Description</b>	Coreto (1971-1979)	-
<b>Author</b>	IPHAN	-
<b>Archive</b>	IPHAN-GO	-
<b>Signature</b>		-
<b>Copyright</b>		-



**Fig. 62** Coreto (1971-1979)

<b>Type</b>	Photograph	<b>Used in:</b>
<b>Description</b>	Coreto (1971-1979)	-
<b>Author</b>	Jornal O Popular	-
<b>Archive</b>	Jornal O Popular	-
<b>Signature</b>		-
<b>Copyright</b>		-

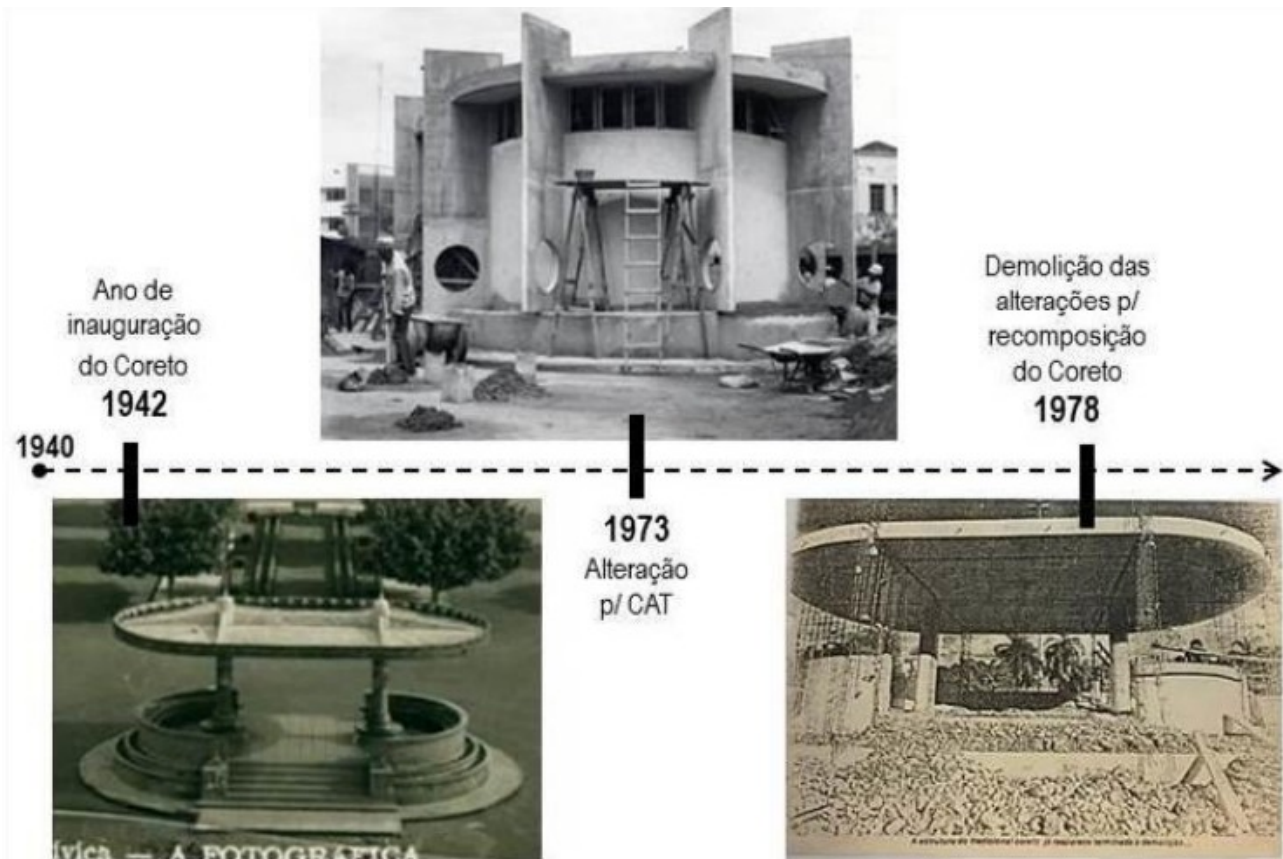


Fig. 63 Timeline of modifications

Type	Used in:
Photograph	
<b>Description</b> Timeline of modifications	-
<b>Author</b>	-
<b>Archive</b> IPHAN-GO; MIS-GO	-
<b>Signature</b>	-
<b>Copyright</b>	-



**Fig. 64** View of the square - 1975

<b>Type</b>	Photograph	<b>Used in:</b>
<b>Description</b>	View of the square - 1975	-
	Here we can see the color of the Banstand.	-
<b>Author</b>		-
<b>Archive</b>	MIS-GO	-
<b>Signature</b>		-
<b>Copyright</b>		-

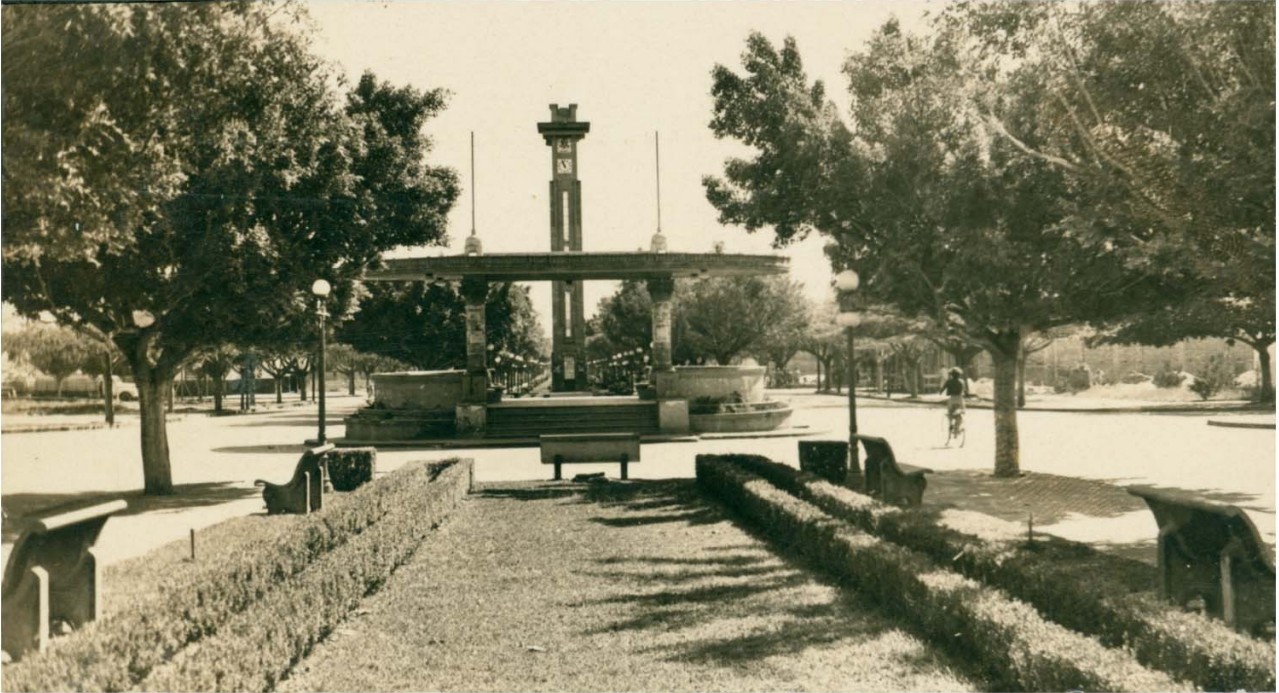


Fig. 65

Type	Photograph	Used in:
Description		-
Author		-
Archive		-
Signature		-
Copyright		-



**Fig. 66** O Coreto em 1947

<b>Type</b>	Photograph	<b>Used in:</b>
<b>Description</b>	O Coreto em 1947	-
<b>Author</b>	Acervo Deborah Gouthier	-
<b>Archive</b>	Acervo Deborah Gouthier	-
<b>Signature</b>		-
<b>Copyright</b>		-



**Fig. 67** Vista aérea da Praça [1950]

<b>Type</b>	Photograph	<b>Used in:</b>
<b>Description</b>	Vista aérea da Praça [1950]	-
<b>Author</b>		-
<b>Archive</b>	MIS-GO	-
<b>Signature</b>		-
<b>Copyright</b>		-