

Throughout the development of the exercise, there were some questions about what the building would actually look like and what representation of it would actually be correct.

Some inconsistencies in the various drawings showed different aspects of the same building, and sometimes different aspects within the same point of view:

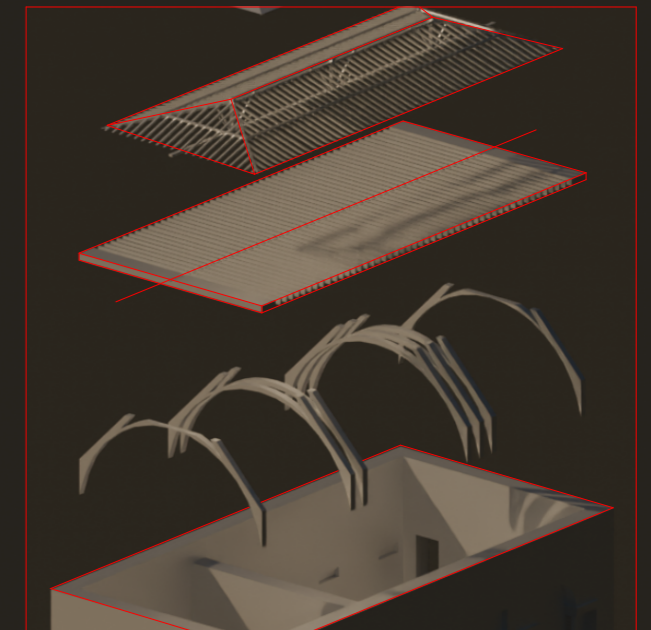
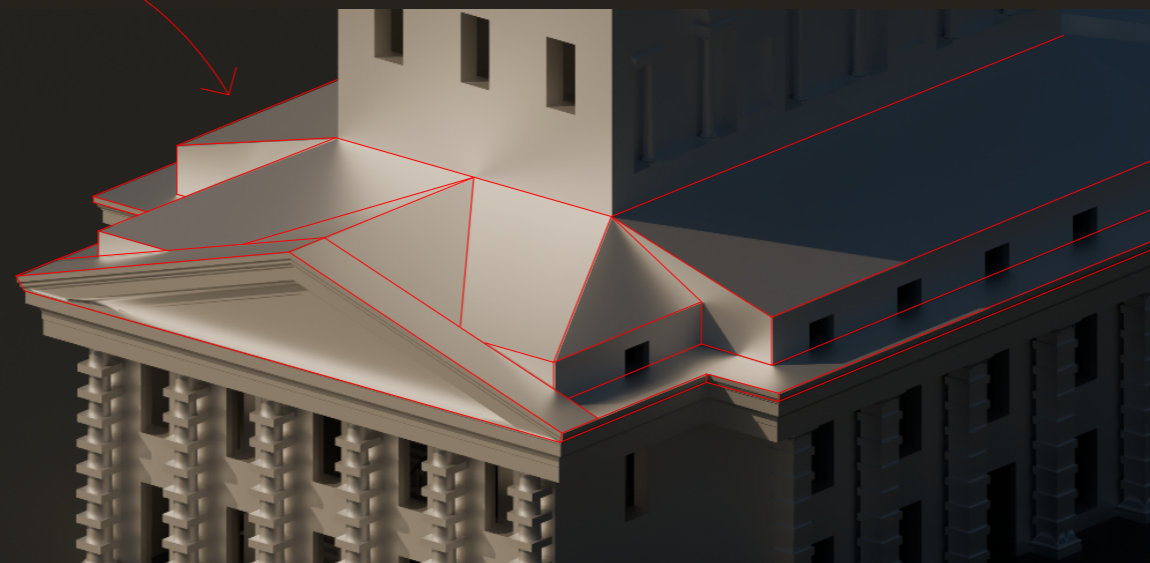
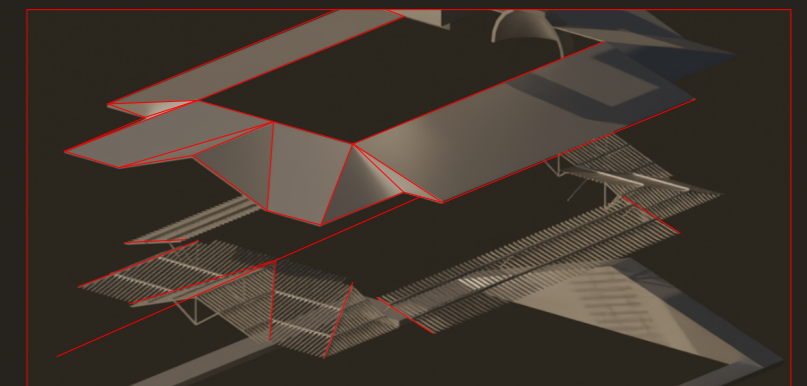
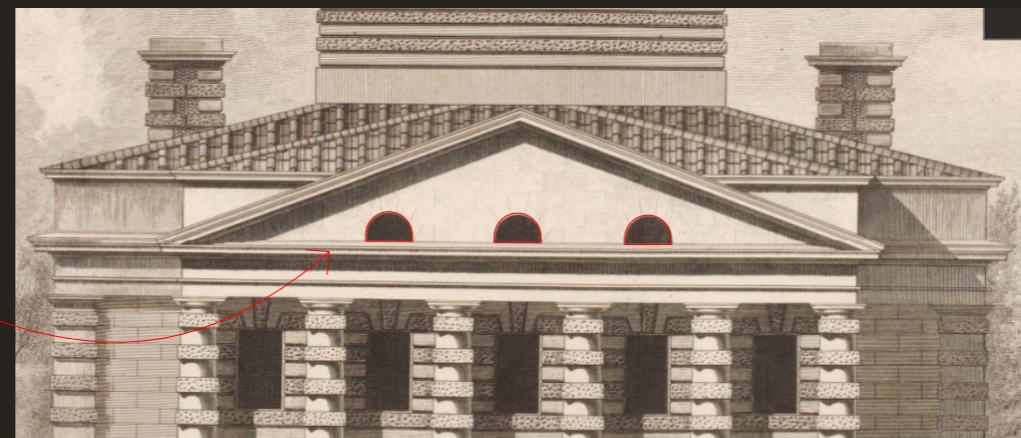
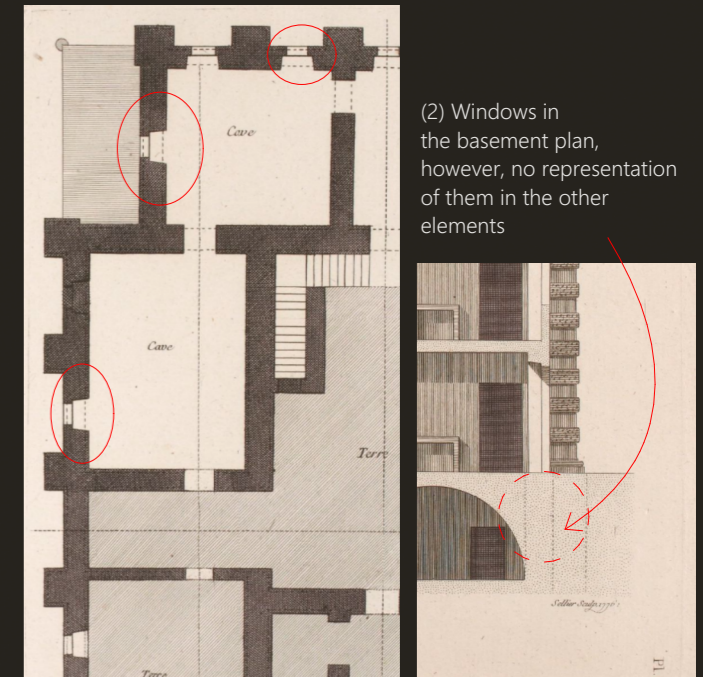
Such as stairwells present in the plans but in the section it is not possible to see their interruption. (1)

Windows in the basement are seen in plan but are not represented either in elevation or in section. (2) The same work was placed side by side with other reference works by the same author, in which the architect projected windows on the underground floor. However, we ended up agreeing that this would not be the case, since the windows are not represented in any other element.

Elevation windows that only appear occasionally, do not correspond directly to any interior space. (3)

The drawings also brought us a lot of ambiguity in relation to the design of the roof (4), we tried to understand together with the sections and elevations what the design of this would be. Its final design was achieved through a presumption of alignments in the face of the elements taken for granted. Along with the wooden structure inside this, it was also drawn from intuition and the small part present in the main section.

These issues, among others, were addressed throughout the study of the building, and it is possible to reach the final result with more certainty and conclusions than in a first moment of analysis of the building.



Arc-et-Senans, Pavillon du Directeur

Claude Nicolas Ledoux