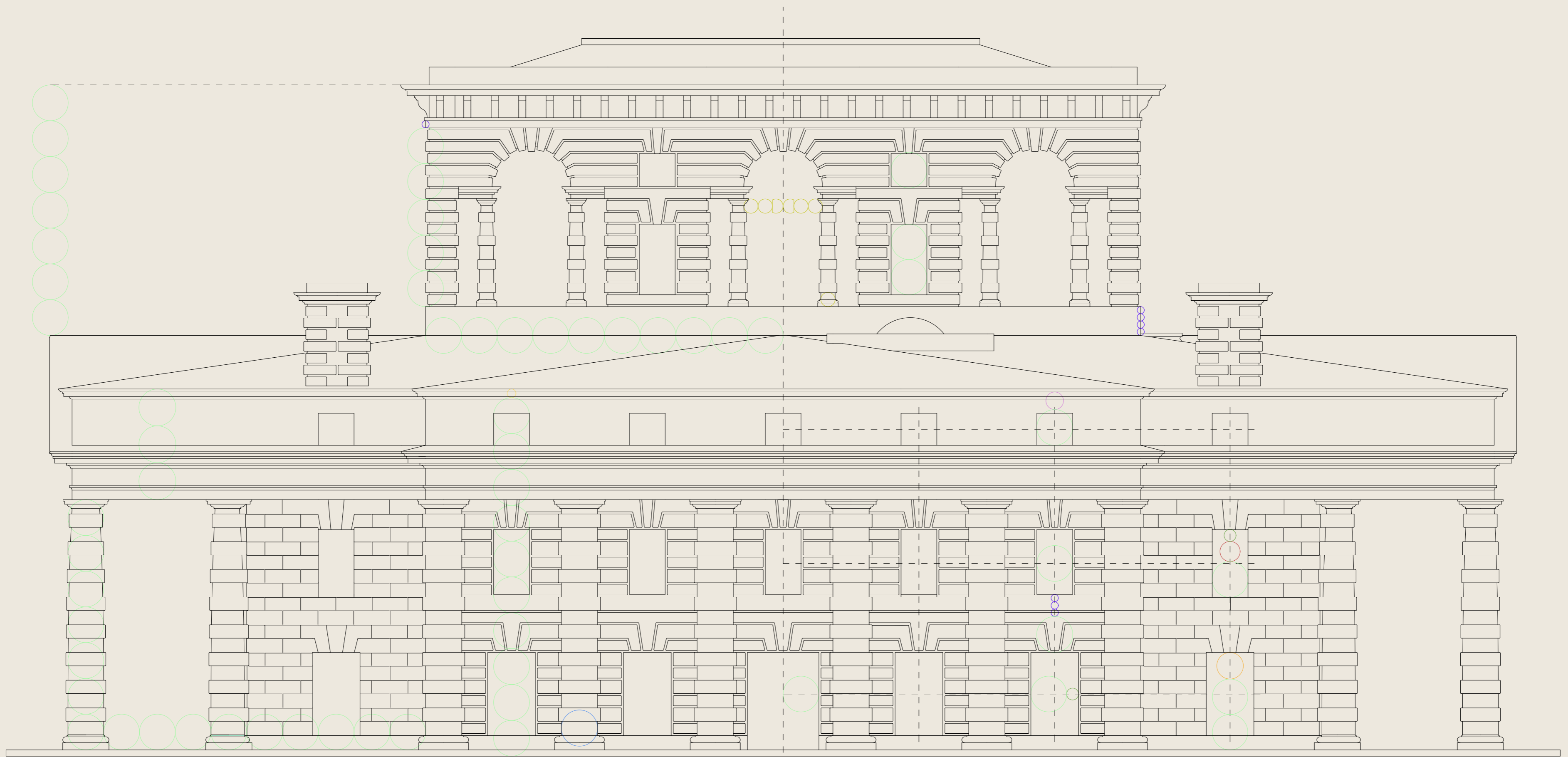
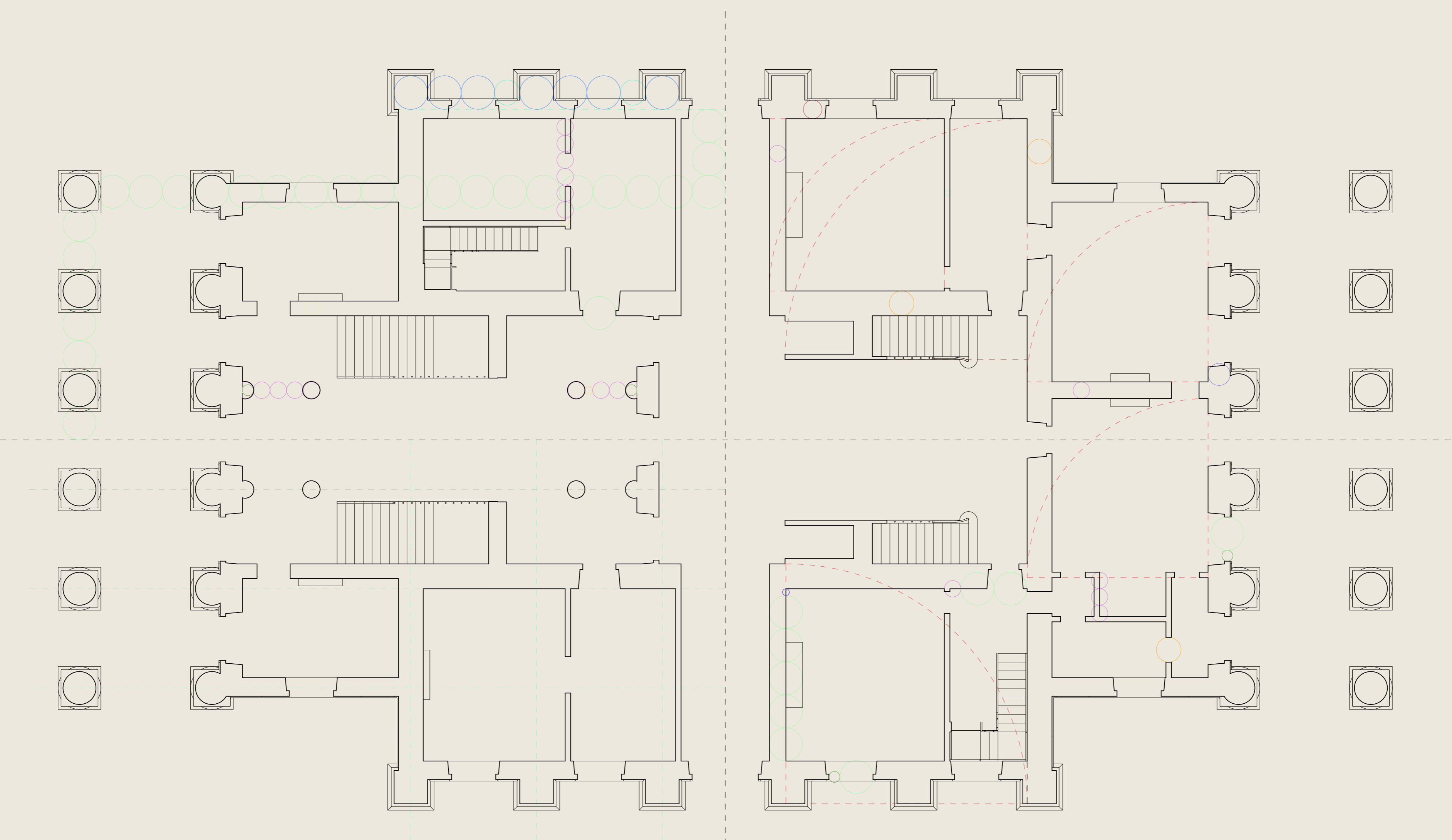


Tavola dei moduli



Prospetto longitudinale



Pianta piano terra

Moduli	
= diametro colonna esterna (A)	= diametro pilastro (B)
= 1/2 A	= 2/3 A
= 1/3 A	= 9/16 A
= 1/4 A	= 3/4 A
= 1/5 A	= 2/5 A
= 1/6 A	= 4/9 A
= quadrati	= diametro colonna tuscanica interna e della torre

